

An abstract painting by Dennis Creffield, featuring a dense and textured composition of various colors including blues, greens, reds, and purples. The brushstrokes are thick and expressive, creating a sense of movement and depth. The overall effect is one of vibrant energy and complex visual information.

DENNIS CREFFIELD

PAINTINGS OF INNOCENCE AND EXPERIENCE

DENNIS CREFFIELD. PAINTINGS OF INNOCENCE AND EXPERIENCE

JAMES HYMAN









Dennis Creffield. Paintings of Innocence and Experience
is published to coincide with an exhibition at James Hyman
Fine Art, London, in Autumn 2015

Artworks by Dennis Creffield © 2015 The Artist
Studio Photographs © 2015 James Hyman

Published by

JAMES HYMAN FINE ART

16 Savile Row
London W1S 3PL
(+44) 0207 494 3857
info@jameshymangallery.com
www.jameshymangallery.com





R.B.Kitaj once described Creffield as 'England's most closely guarded secret' and although enormously respected, his work remains less well-known than it should. Often compared to Frank Auerbach and Leon Kossoff, who also took classes with David Bomberg at the Borough Polytechnic, Creffield's language is unmistakably his own. The diversity of his subjects is also incomparable. As well as returning to familiar motifs - such as views from Greenwich in the 1950s and of the sea at Brighton in the 1970s and 1980s - Creffield's oeuvre is characterised by the diversity of subjects on which he has worked, often as a result of a commission. Now in his eighty-fifth year, this exhibition confirms Creffield's stature, provides a rare, in depth, opportunity to see paintings by Creffield and is a chance to marvel at the extraordinary accomplishment of his economic yet lush mark-making. I am honoured to be staging our third solo exhibition of Creffield's work. I am grateful to Dennis for agreeing to this selective overview and for releasing favourite paintings that he has previously retained.

James Hyman, July 2015

1. *Self-Portrait (Slade)*

Oil on board
76.5 x 64 cms
1960





2. *Seated Nude*
Oil on board
76 x 61 cms
1949



3. *Seated Nude (Slade)*

Oil on board

76 x 61 cms

1959



4. *Self-Portrait (Slade)*
Oil on board
77 x 61 cms
1959



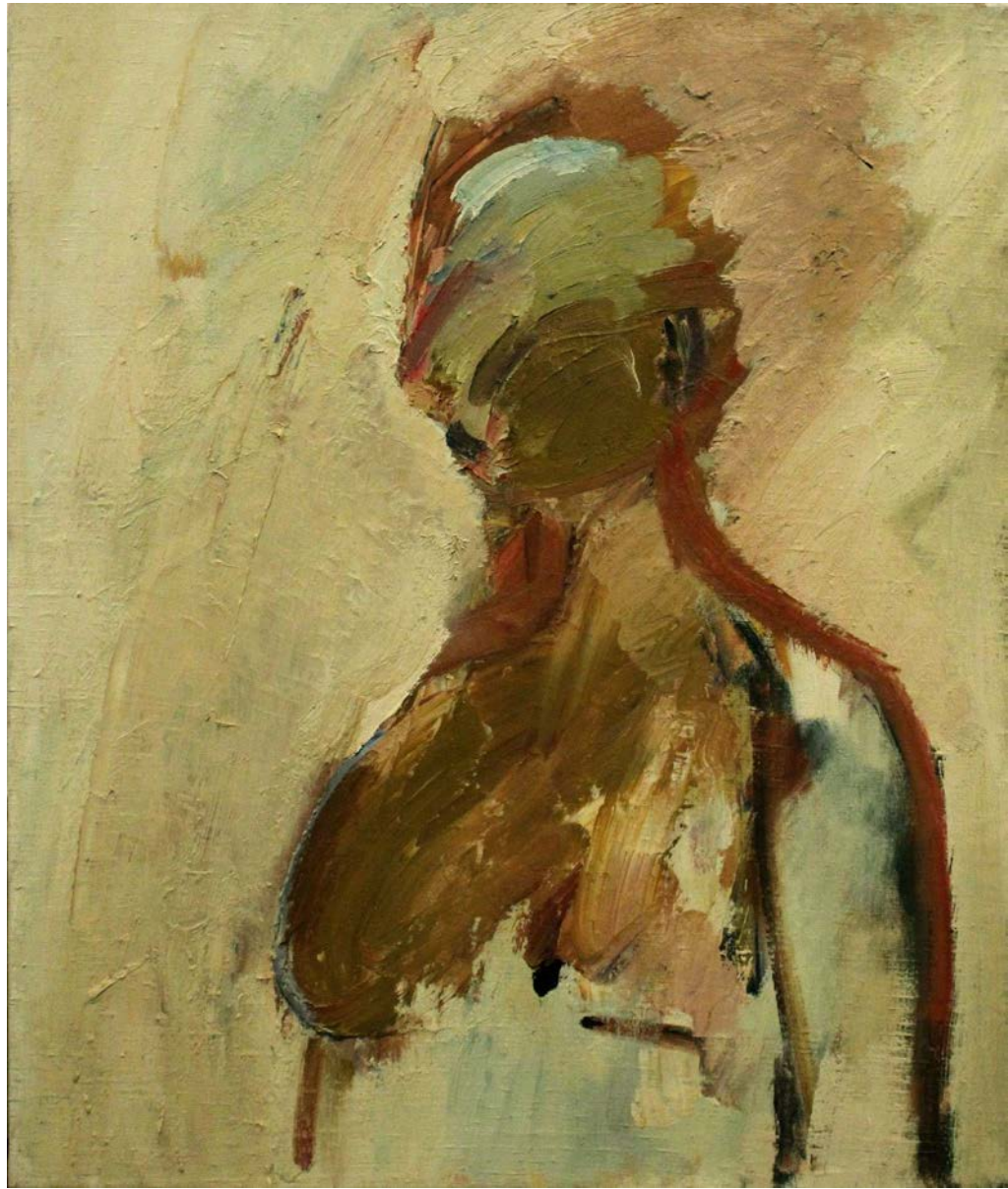
5. *Self-Portrait (Slade)*
Oil on board
77 x 61 cms
1959

6. *Dorothy Mead*

Oil on canvas

76.5 x 63 cms

1973





7. *Still Life with Straw Hat*

Oil on board
76 x 101 cms
1959



8. *Dead Rabbit (London)*

Oil on board

76 x 61 cms

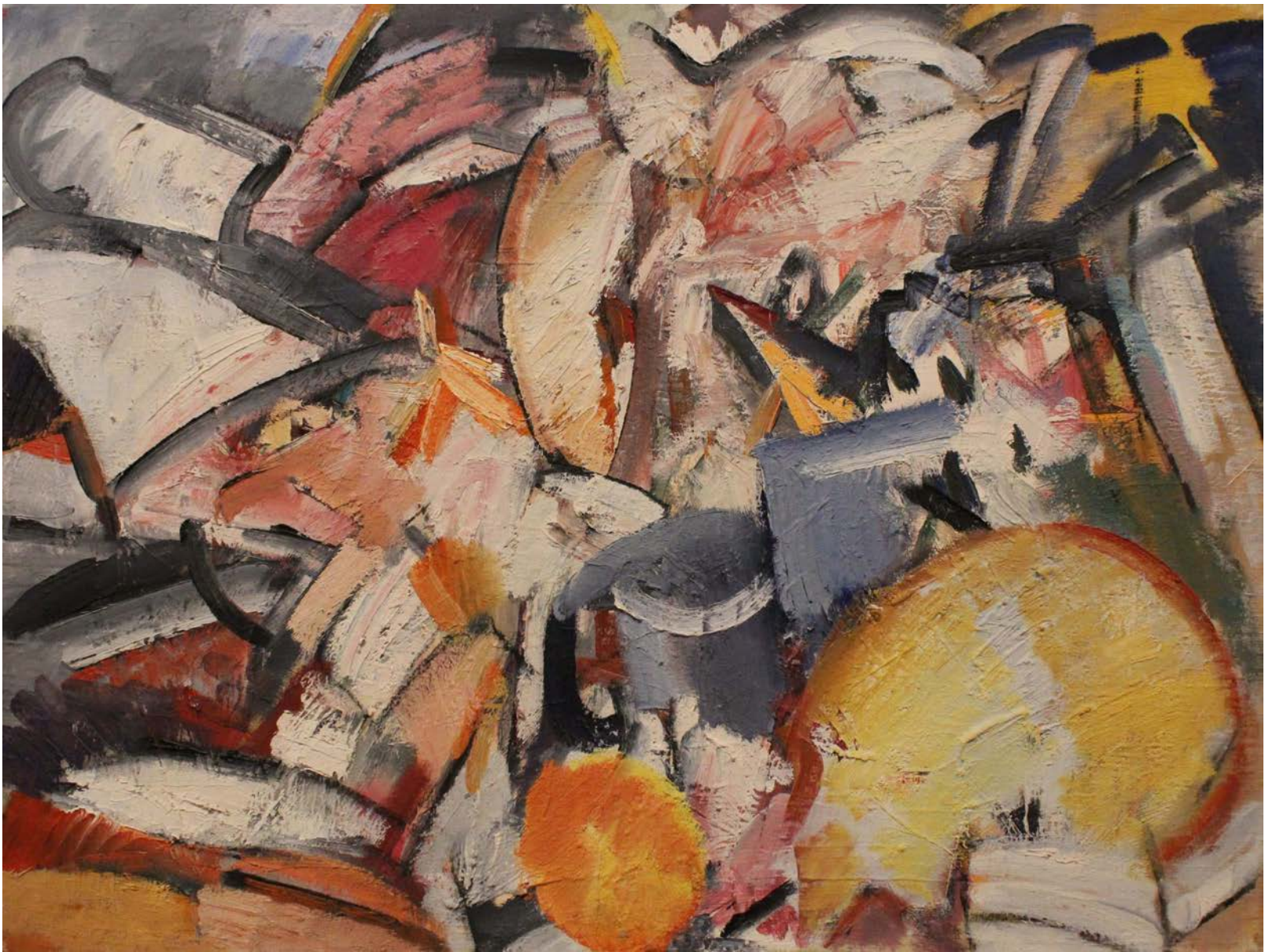
1962

9. *Still Life with Skull*

Oil on canvas

101 x 76 cms

1965



10. *The London Group Exhibition, 1965*

Oil on canvas

121 x 151.5 cms

1965



11. *Flowers*
Oil on canvas
71 x 91.5 cms
1972



12. *In the Studio*
Oil on canvas
101.5 x 127 cms
1976



13. *Good Morning*

Oil on canvas

63.5 x 76 cms

1972



14. *The Lovers*
Oil on canvas
122 x 141 cms
1970

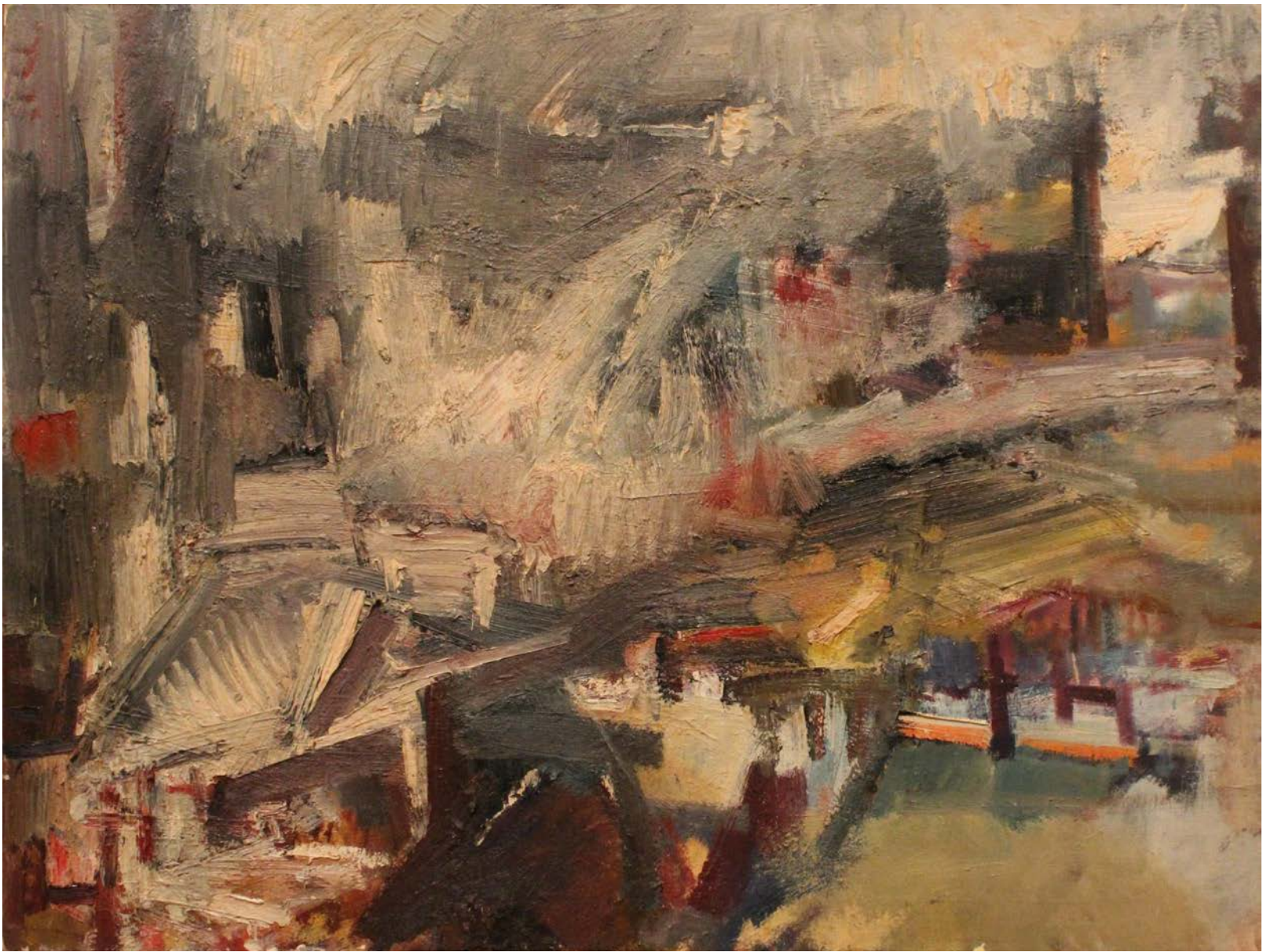


15. *Greenwich from the roof of the Royal Observatory*

Oil on canvas

76 x 101 cms

1959



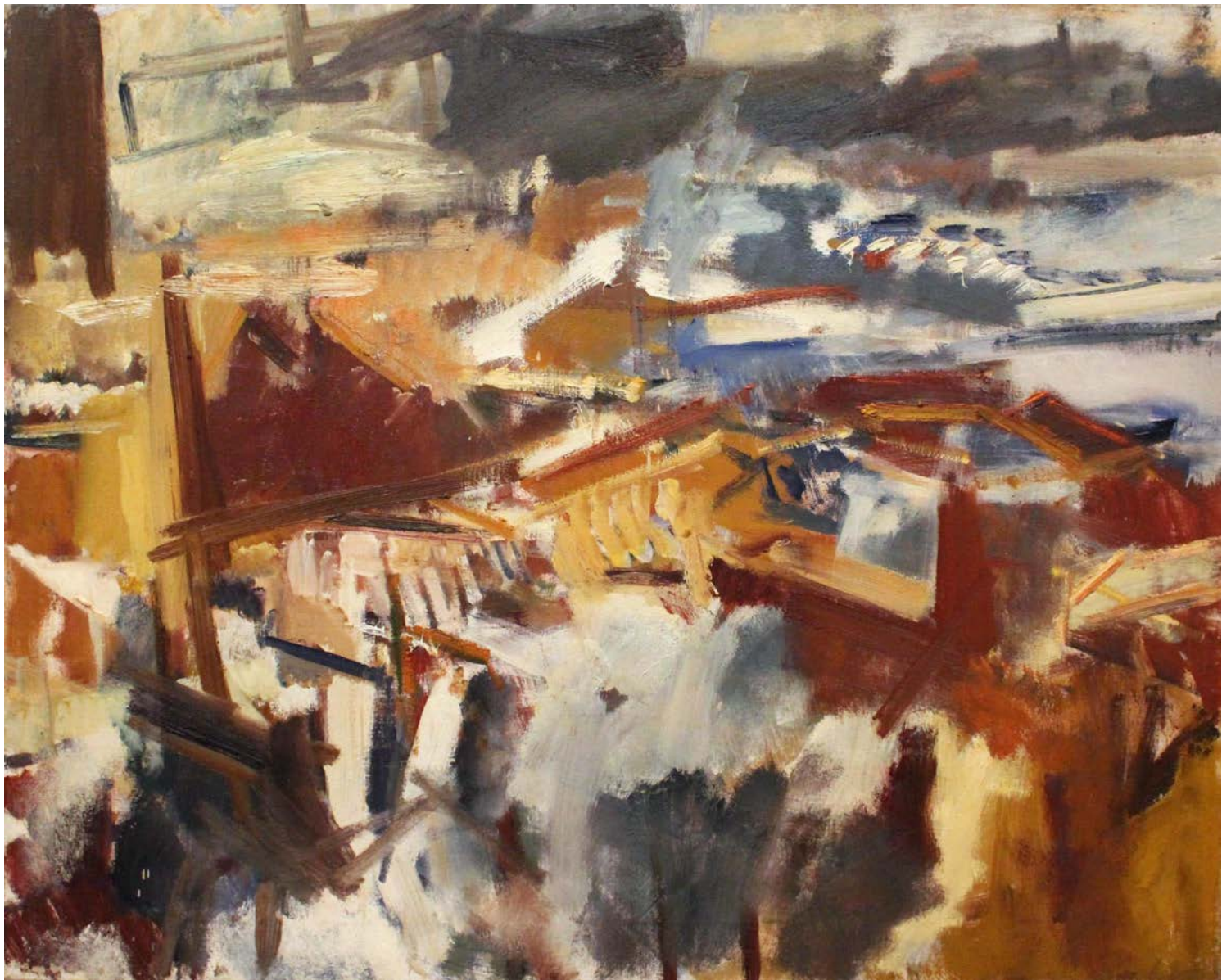


16. *Greenwich Winter*

Oil on board

71 x 92 cms

1957

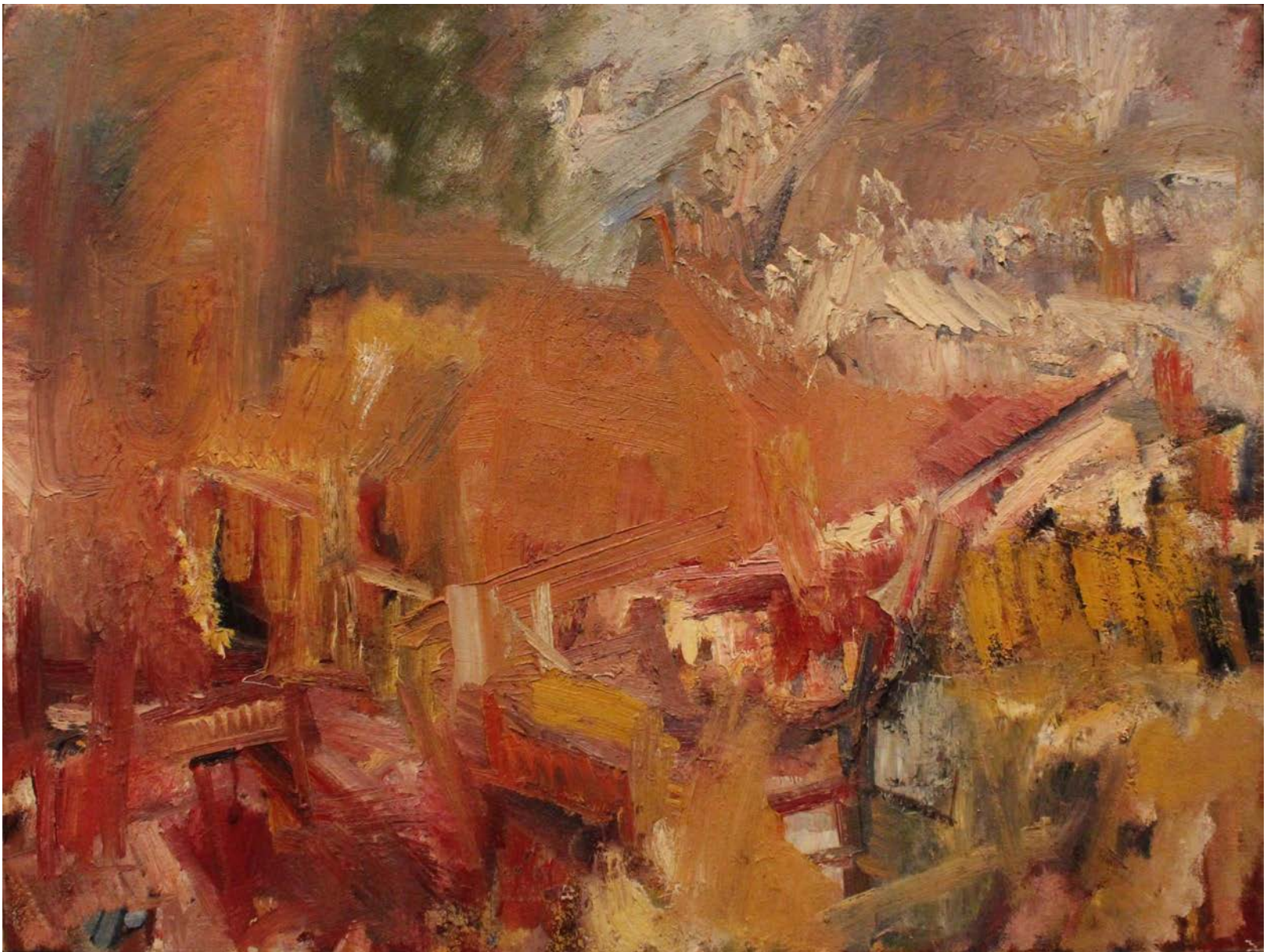


17. *Greenwich from the Roof of the Royal Observatory*

Oil on canvas

71 x 92 cms

1958



18. *Greenwich from the Royal Observatory*

Oil on canvas

76 x 101

1959



19. *Towards the Isle of Dogs From the Greenwich Observatory*

Oil on board

61 x 76 cms

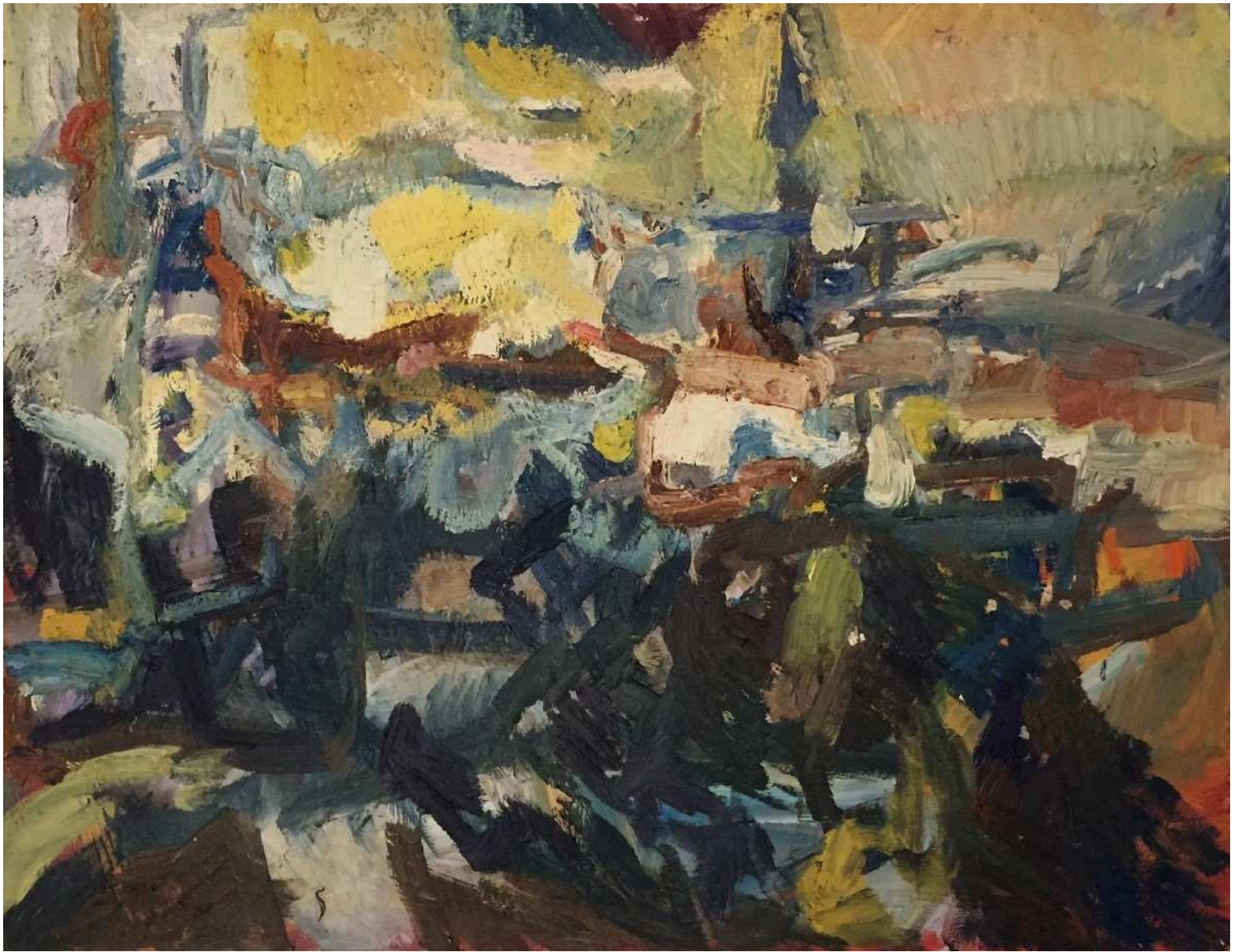
1960

20. *Isle of Dogs from Greenwich Observatory*

72 x 92.5

Oil on board

1959

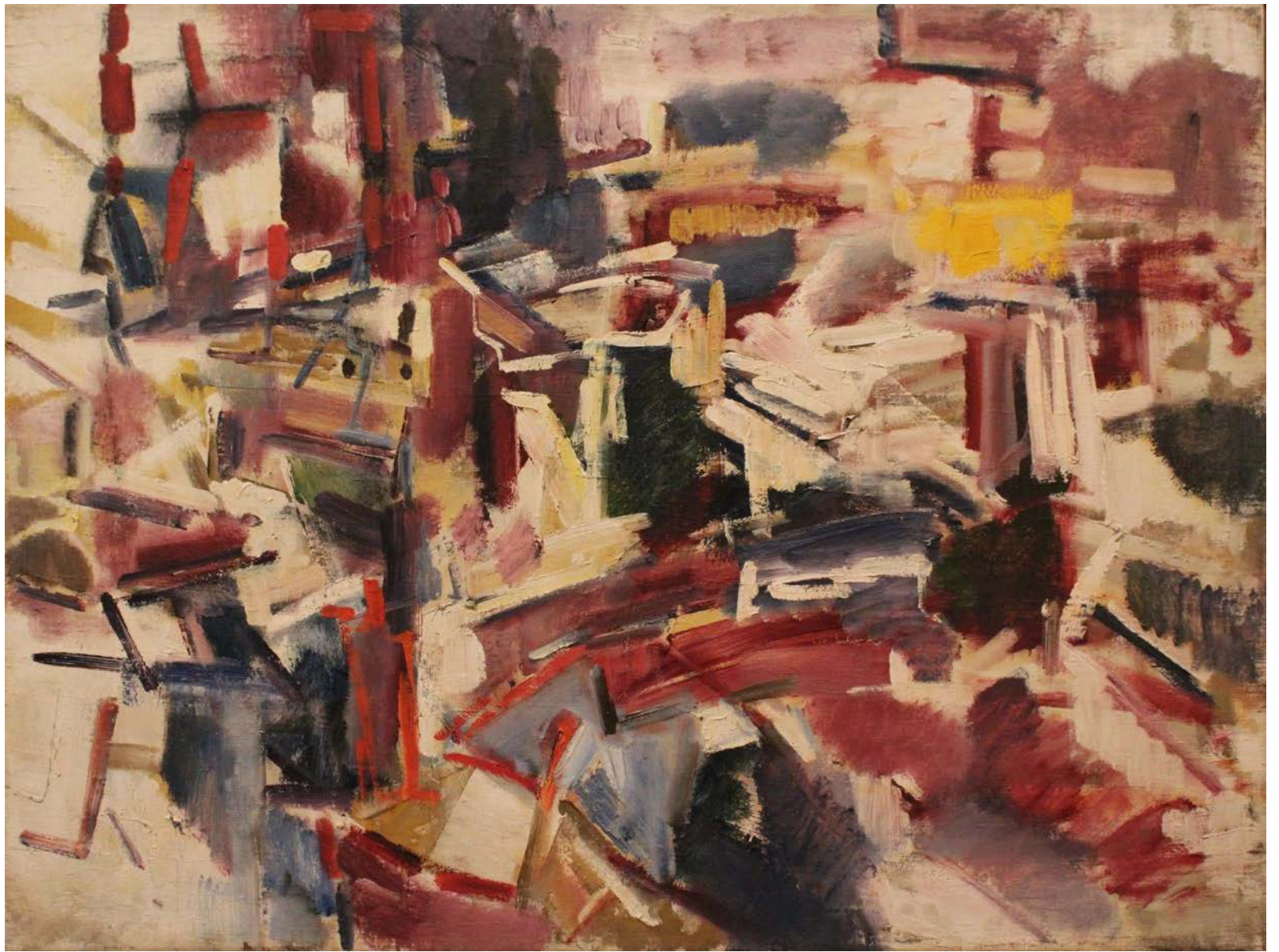


21. *Leeds, from the roof of the University*

Oil on canvas

76 x 101 cms

1965



22. *Landscape - Halifax*

Oil on canvas

126 x 152.5 cms

1965





23. *Gloucester Cathedral, from East End*

Oil on canvas

86 x 71.5 cms

1988



24. *Exeter Cathedral*

Oil on canvas
76 x 86.5 cms
1988

25. *Winter Storm from the Studio*

Oil on canvas

86 x 91 cms

1985



26. Brighton Pier

Oil on canvas

86 x 91 cms

1985



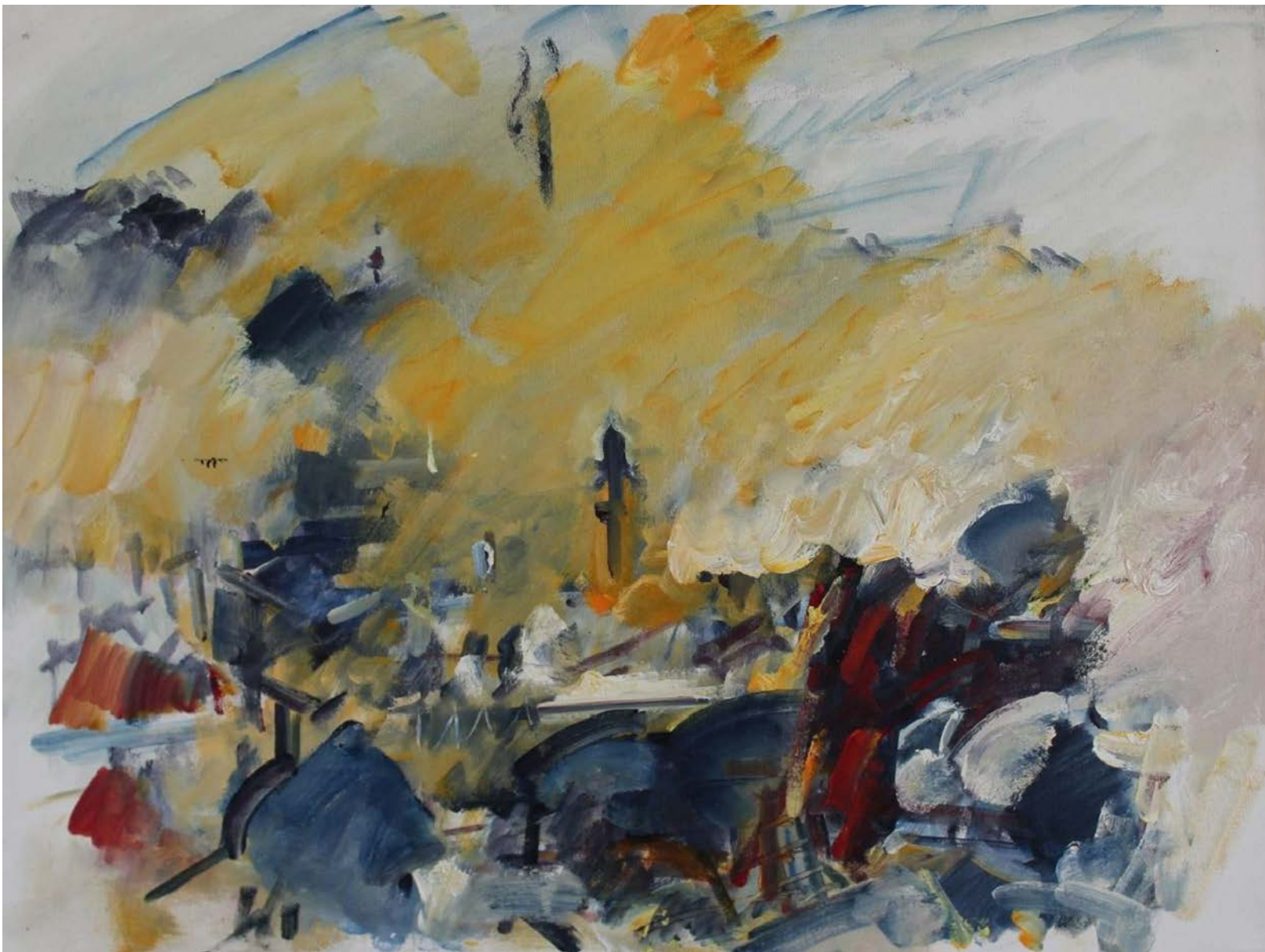


27. *Jerusalem - Sunrise (2)*

Oil on canvas

70 x 80 cms

1994



28. *Jerusalem - Sunrise (3)*

Oil on canvas

70 x 80 cms

1994

29. *Hallelujah*
Oil on canvas
101 x 84 cms
2008-2010





DENNIS CREFFIELD

One of the most powerful draughtsmen at work today, the paintings and drawings of Dennis Creffield combine a fidelity to the subject with immense improvisation to fuse empiricism with a profound spirituality. Perhaps most famous for his epic drawings of the Cathedrals of England and France, the human body has also been a longstanding preoccupation.

Creffield's work is in numerous museum collections from Tate Britain to the Los Angeles County Museum.

Dennis Creffield is represented by James Hyman Fine Art, London.

1931
Born in London

1948-51
Studied with David Bomberg at the Borough Polytechnic, London

1957-61
Studied at the Slade School of Fine Art, London
Winner of the Tonks Prize for Life Drawing
Winner of the Steer Medal for Landscape Painting

1961
A Prizewinner at the John Moore's Liverpool Exhibition

1962-84
Member of the London Group

1964-68
Gregory Fellow in Painting at the University of Leeds

1977
Arts Council Major Award for Painting

1987
Commissioned by the South Bank Board to draw all the Medieval Cathedrals of England

1990
House of Commons Fine Art Committee commission

1990/92/94/96
National Trust's Foundation for Art commissions

1997
Rome Abbey Scholarship 1997

2002
Commissioned by the globegallery, Hay-on-Wye, to draw Welsh and English Castles

2007
Commissioned by James Hyman to produce works on the theme of Jerusalem

Solo Exhibitions

2015

Dennis Creffield. Paintings of Innocence and Experience, James Hyman Fine Art, London

2014

Dennis Creffield: Cathedrals of England and France, Pallant House Gallery, Chichester

2011

Dennis Creffield. Jerusalem, James Hyman Fine Art, London

2007

Dennis Creffield. Body and Soul, James Hyman Fine Art, London

2006

Imagining Mozart, The Globe Gallery, Winchester

2005

Retrospective Exhibition, Flowers East, London

2002

Impressions of Castles, Drawings of Welsh and English Castles, globegallery, Hay-on-Wye

2001

Orford Ness – The Pagodas and Other Buildings, Aldeburgh Cinema Gallery, Suffolk

1999

A Year of Saturdays – Paintings and Drawings of London, Clifford Chance, London

1995

Paintings and Drawings of Orford Ness, Connaught Brown, London

1993–5

Paintings of Petworth, Gillian Jason Gallery, London, touring exhibition to Petworth House; Midlands Art Centre, Birmingham; Peterborough Museum & Art Gallery; Durham Art Gallery; Brighton Museum & Art Gallery

1992

Paintings and Drawings of London 1960–90, Barbican Gallery, London

1991

French Cathedrals, Albermarle Gallery, London

1988–90

English Cathedrals, South Bank touring exhibition to Winchester; Wrexham; Norwich; Peterborough; Durham; Sheffield; Manchester; Brighton; Canterbury; Coventry; Worcester; Exeter; The Camden Arts Centre, London

1989

A Midsummer Night's Dream – Painting and Drawing, Goldmark Gallery, Uppingham and the RSC Theatre, Stratford-upon-Avon

1981

The Wraxall Gallery, London

1980

Drawings, Serpentine Gallery, London
Paintings, AIR Gallery, London

1979

Paintings and Drawings, University of Essex, Colchester

1977

Paintings and Drawings, Brighton Polytechnic Gallery, Brighton

1974

Paintings and Drawings, Morley Gallery, London

1971

Paintings and Drawings, Gardner Centre for the Arts, University of Sussex

1967

Drawings, Queen's Square Gallery, Leeds

1966

Paintings and Drawings, Leeds City Art Gallery, Leeds

Selected Group Exhibitions

2011

Beyond the Human Clay, James Hyman Fine Art, London

2009

The Borchard Collection, Artists' Self Portraits, Kings Place Gallery, London

Water Water Everywhere, James Hyman Fine Art, London

2008

Drawn from the Collection. Four Hundred Years of British Drawing, Tate Britain

Treasures from the Wilson Collection, Falmouth Art Gallery, Falmouth

2007

A Tribute to Sir Colin St. John Wilson, James Hyman Fine Art, London

Bomberg and The Borough Group, Pallant House Gallery, Chichester

2006

Drawing Inspiration, Abbot Hall Art Gallery, Kendal, Cumbria

2004

War Fields Exhibition, The Imperial War Museum, London and The Wolsley Gallery, Ipswich

Bomberg and The Borough, Tate Britain, London

Bomberg and Pupils: The Borough Group, 1946–51, The Boundary Gallery, London

Tom Bendhem: Collector, Contemporary Art Society Travelling Exhibition, 2004–5

2001

Small is Beautiful, Flowers East, London

1996/7/8

The Ice Gallery, New York

1997

The Art of Drawing, Pallant House Gallery, Chichester

1996

Inside Bankside, South London Gallery, London

1995

The National Trust Centenary Exhibition, Christie's, London

1993

The Sussex Scene; Artists in Sussex in the 20th Century, Towner Gallery, Eastbourne and the Hove Museum

Portrait of the Artists Mother from Memory, Flowers East, London

1992–3

Prospects, Towner Art Gallery, Eastbourne

Innocence and Experience, Art Council Touring Exhibition

British Figurative Painting in the 20th Century, The British Council, Sotheby's London and the Israel Museum, Jerusalem, Israel

1991–2

Hortus Cambrensis, Welsh Gardens, Touring Exhibition in Wales

1991

Marks of Tradition, Museum of Modern Art, Oxford

1989–90

New Icons, Warwick University Art Gallery, Touring Exhibition to Exeter and Lincoln

1988

Cathedral Drawings, The Bar Convent Museum, York

1987

Landscapes, Castlefield Gallery, Manchester

1987 cont'd.

Past and Present – Contemporary Artists Drawing from the Masters, South Bank Centre Touring Exhibition 1987–88

1986–87
English Flower Paintings, Arts Council Touring Exhibition

1985–87
Rocks and Flesh – British Drawings, Touring Exhibition

1985
Human Interest – 50 Years of British Art About People, Arts Council Exhibition

1984–6
Two Dimensions, SE Arts Council/Sweden Exchange Exhibition, Sweden

1983
British Artists at the Cyprus Summer School, Woodlands Gallery, London

Drawings, Anne Berthoud Gallery, London

1982
Figurative Art Today (with Davidson and Epstein), Seven Dials Gallery, London

1981
Drawings, Moira Kelly Gallery, London

The Tolly Cobbold, Eastern Arts Exhibition

Artists for Nuclear Disarmament, Acme Gallery, London

1979–80
The British Art Show, Arts Council Touring Exhibition

1978
British Painting 1953–1978, The Royal Academy, London

1977
Life Drawing (with John Epstein), Brighton Polytechnic Gallery, Brighton

1972
Brighton Festival, Brighton Polytechnic Gallery, Brighton

1971
Art Spectrum South, Arts Council Touring Exhibition

The Slade Centenary Exhibition 1871–1971, The Royal Academy, London

1967
Nudes, Grosvenor Gallery, London

1966
Survey 66; Figurative Painting, Camden Arts Centre, London

The Gregory Fellows (with Neville Boden), AIA Gallery, London

1965
International Exhibition of Drawing, Toronto, Canada

1964
London Group Jubilee Exhibition 1914–64, The Tate Gallery, London

1961
Six Young Painters, Arts Council Touring Exhibition

1960
Seven Figurative Painters, AIA Gallery, London

1957–61
Young Contemporaries (awarded Arts Council Prize 1960), London

1952
Four English Painters (with Holden, Mead and Richmond), Stockholm, Sweden

Public and Corporate Collections

Aberdeen Art Gallery, Aberdeen
Accenture
Arts Council of Great Britain
Ashmolean Museum of Art and Archaeology, Oxford
Balliol College, Oxford
Birmingham City Art Gallery
Brighton University
British Land
British Museum
Bury Art Gallery and Museum, Lancashire
Cheltenham Art Gallery
The Contemporary Art Society
The Contemporary Art Society for Wales
Clifford Chance, London
Corpus Christi College, Cambridge
The Government Art Collection
East Sussex County Council
The Guildhall Museum, London
Harris Museum, Preston, Lancashire
Hong Kong Land
Hong Kong Provisional Regional Council
The House of Commons
Hove Museum and Art Gallery, Sussex
Keble College, Oxford
Imperial War Museum, London
Laing Art Gallery, Newcastle
Leeds City Art Gallery
Leicestershire Museums and Art Gallery
Liverpool University Art Gallery

Long Term Credit Bank of Japan, London
Los Angeles County Museum, USA
Magdalene College, Cambridge
The Mercer Gallery, Harrogate, Yorkshire
The Museum of London
The National Trust
Norwich City Art Gallery
Pallant House Collection, Chichester
Peterborough City Art Gallery
Peterhouse College, Cambridge
Rugby Art Gallery and Museum
St. John's College, Cambridge
South Eastern Arts
Sussex University, Brighton
Swindon Art Gallery
Tate Britain
Texaco Properties Ltd, London
Towner Art Gallery, Eastbourne
University College, London
University of Leeds Art Gallery, Leeds
Walker Art Gallery, Liverpool
Warwick University
Whitworth Museum, Manchester
Williams College Museum of Art, Massachusetts, USA
Worcester City Art Gallery

Selected Publications

Ackroyd, P. and Packer, W., *Paintings of Petworth*, Gillian Jason Gallery in association with the National Trust's Foundation for Art, 1994.

Cork, R., *French Cathedral Drawings by Dennis Creffield*, Albemarle Gallery, 1991.

Creffield, D., Harrison, M. and Kitaj, R. B., *English Cathedrals*, South Bank Centre, 1987.

Dodd, P., *Midsummer Night's Dream: Drawings and Paintings by Dennis Creffield*, Goldmark, 1989.

Hyman, J. and Creffield, D., *Dennis Creffield*. Jerusalem, London, 2011.

Jacobson, H. and Morris, L., *Dennis Creffield: A Retrospective*, Flowers East, 2005.

Martin, R., *New Icons – Christian Iconography in Contemporary Art*, Craigie Aitchison, Stephen Cox, Dennis Creffield, Brian Falconbridge, Michael Finn, Peter Fraser Etc..., Mead Gallery, Warwick Arts Centre, 1989.

Musson, J., *Paintings & Drawings of Orford Ness*, Connaught Brown in association with the National Trust's Foundation for Art, 1995.

Parry-Crooke, C. and Lynton, N., eds., *Contemporary British Artists with Photographs by Walia*, London, 1979.

Spreckley, S. and Wakelin, P., *Dennis Creffield, Impressions of Castles*, globegallery, Hay-on-Wye, 2002.

Films

1985
Looking into Paintings. 4 – Narrative, dir. Norbert Lynton, Channel 4

1989
The Invisible Recorder. Dennis Creffield at Three East Anglian Cathedrals, dir. Charles Mapleston, Anglia Television

1996
Summer Painting. Dennis Creffield at Salisbury Cathedral, dir. Carolyn Djanogly, Meridian Films

